

Entomological summary – June 2021 (Gampaha District)

There is an increasing trend in entomological indices for both the dengue vectors in Gampaha district during June 2021. Both *Aedes aegypti* (BI=5.8) and *Aedes albopictus* (BI =16.5) indices were reported above the threshold level during period in most of the MOH areas within Gampaha district.

Table 1: Monthly Vector Surveillance Summary

Date	Area Data		inspected containers		Inspected premises	Premise Index		Container Index		Breteau Index		Major breeding places found
	M.O.H. area	Locality	Wet	Dry		A	B	A	B	A	B	
04th	Biyagama	Gonawala	28	37	50	2	16	3.6	57			Discarded Items Covering items Pet feeding
17th	Biyagama	Peragaha Junction	7	11	25	0	12	0	57			Concrete slabs Gutters
30th	Jaela	Silver MV	75	53	50	4	8	5.3	8			Water Storage Discarded items
21st	Kelaniya	Lumbini mawatha	140	188	100	2	7	1.4	5.7	2	8	Covering items Natural Water Storage
22nd	Kelaniya	Umagiriya	42	71	75	2.7	9.3	4.8	17			Covering items Water storage
24th	Mahara	Vihara mawatha	79	50	55	9.1	16	6.3	14			Discarded Water storage
30th	Negombo	Lazerous rd	34	98	50	4	0	18	0			Covering Items Tyres
16th	Minuwangoda	Town	100	126	25	0	24	0	33			Temporary removals Discarded
29th	Wattala	Pokuna rd	93	75	100	8	10	8.6	12	8	11	Tyres, Gutters Temporary removals Covering items
30th	Ragama	Hospital rd	42	48	56	0	8.9	0	14			Ornamentals Gutters
28th	Ragama	Annasihena	64	18	50	14	4	14	4.7			Temporary removals Discarded]
Total			704	775	636	4.6	9.6	5.3	15	5.82	16.5	

2. Institute Summary

Institution	No. of premises inspected	No. premises positive with Aedes	No. of premises with wet containers	no. of premises with dry containers	Percentage positivity
Schools	1	1	1	1	100.0
Factories	1	1	1	1	100.0
Government inst.	13	11	13	13	84.6
Religious Places	4	3	4	4	75.0
Private Inst.	3	1	3	3	33.3
Houses	636	90	704	775	14.2
	659	108	727	798	16.4

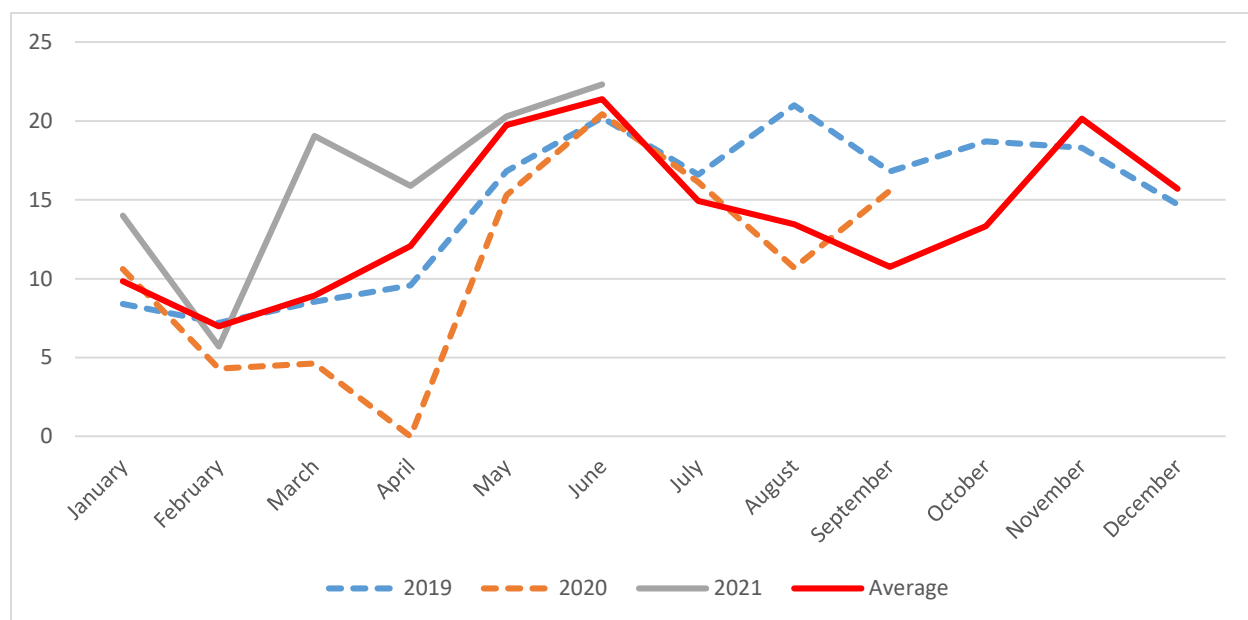


Figure 1: Entomological trend- Last five years

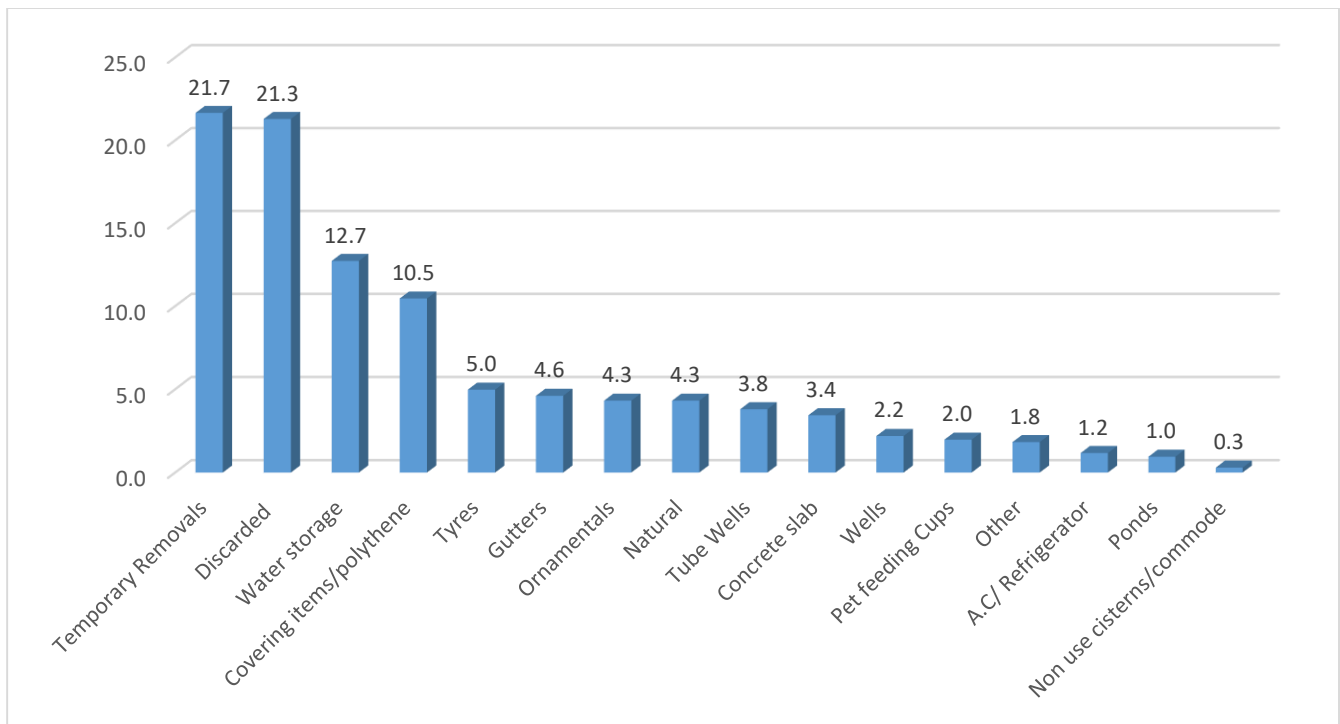


Figure 2: Summary of Wet potential containers- Gampaha district

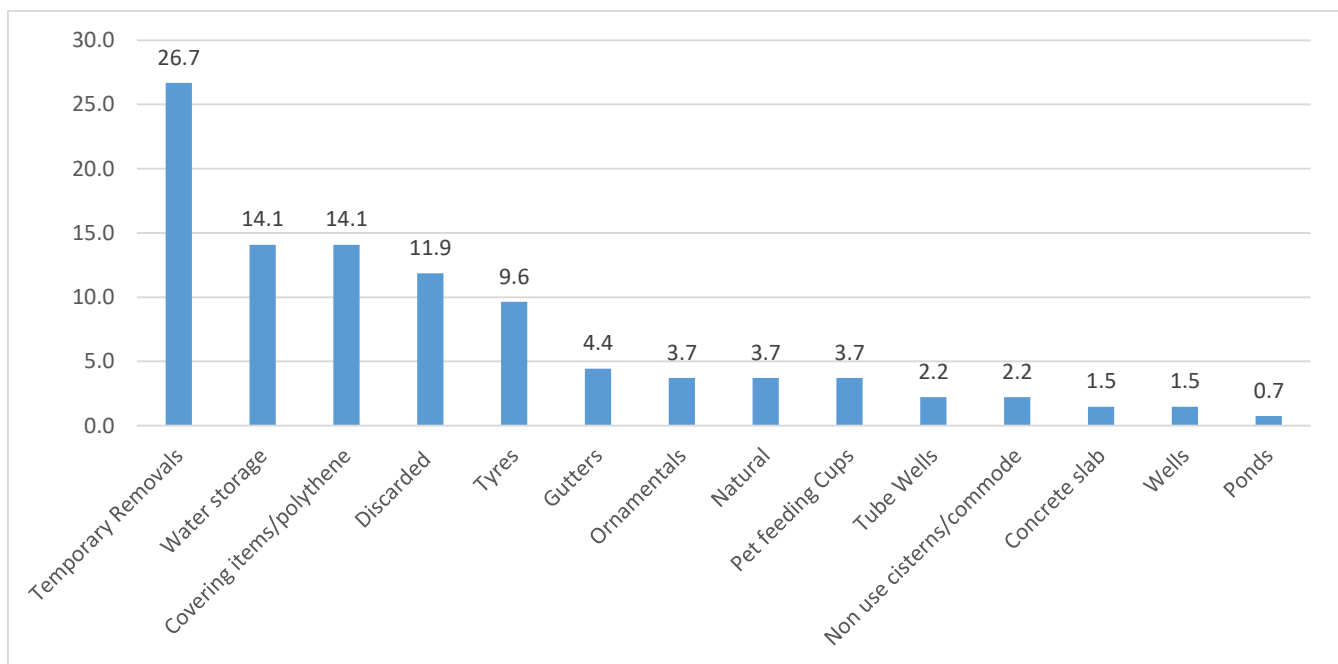
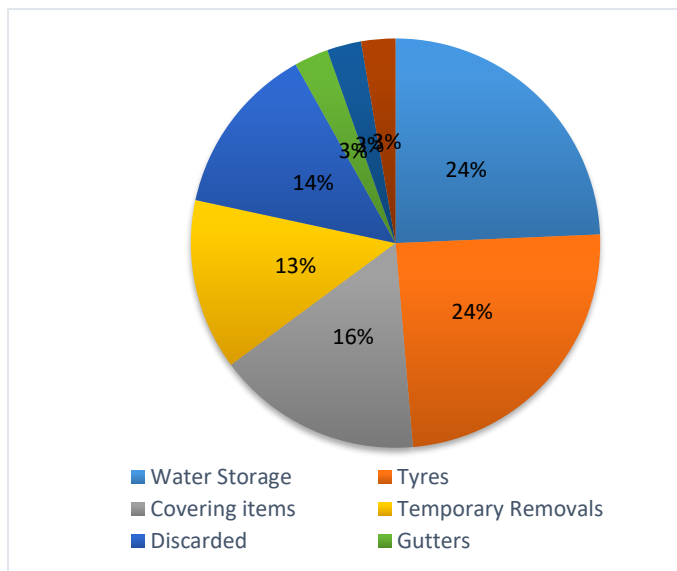
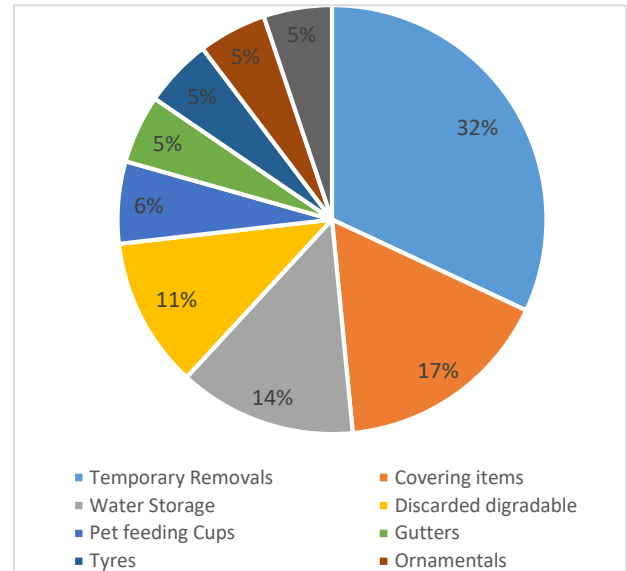


Figure 3 : Summary of Wet potential containers- Gampaha district



***Aedes aegypti* – June 2021**



***Aedes albopictus*– June 2021**

Figure 4: Summary of Positive Containers- Gampaha District (Species wise percentage)

55% of potential containers were represented by temporary removal items, Discarded containers. And covering items. Water storage items were identified as 2nd most prevalent potential breeding source of *Aedes* mosquitoes in Gampaha district followed by tyres and gutters. Therefore, according to entomological surveillance data immediate cleanup campaigns should be arranged all the MOH areas with ongoing rainfall and dengue teams should be reallocating for premise inspection, source reduction and public awareness campaigns to minimize further spread of the disease. Public awareness system should address following points.

- Proper disposal of solid waste by reducing, reusing and recycling of discarded receptacles
- Regular cleaning with scrubbing of water storage tanks, ornamental items and refrigerator trays and Mosquito-proofing of water storage cement tanks, domestic wells and overhead tanks/cisterns permanently
- Proper storage of used tyres, household and garden utensils under a shade
- periodic cleaning of roof gutters (removal of unserviceable roof gutters)

Entomologist

Gampaha